



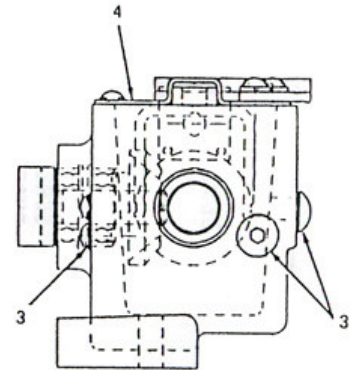
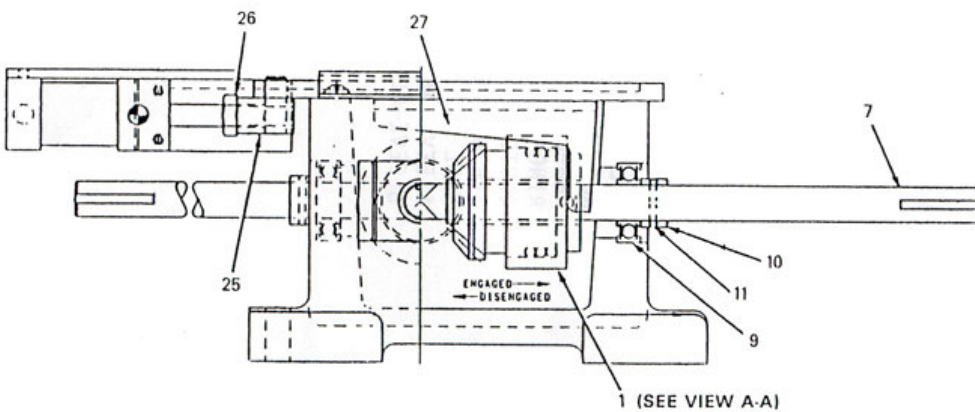
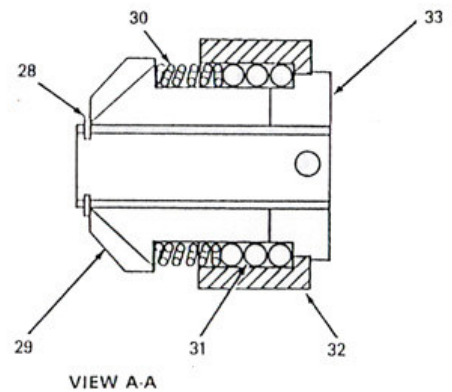
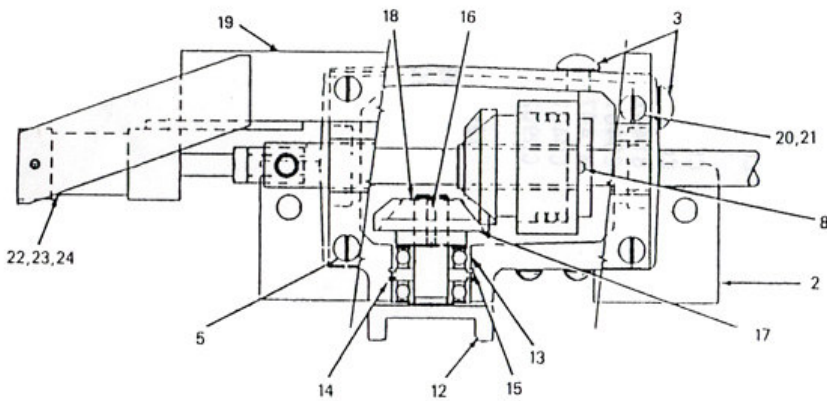
26601 East State Route EE  
P.O. Box 349  
Harrisonville, MO 64701  
Voice: 800-510-4181 or 816-887-5831  
Fax: 816-887-5834

## Page Pack Gear Box Assembly

<b>Page Pack Gear Box Assembly – D46997-1</b>		
<b>Part Number</b>	<b>Figure Number</b>	<b>Description</b>
C90490-1	1	Gear Clutch
D29893-1	2	Ink Pump Gear Box
C40137-3703	3	Cap Screw
B140726-1	4	Cover
C40136-2503	5	Screw
B155778-1	7	Shaft Mitre Gear Clutch
863300-1812	8	Spirol Pin
722605-1066	9	Ball Bearing
B130733-5	10	Control Worm Spacer
863300-1206	11	Spirol Pin
B133070-1	12	Flanged Ink Coupling
722605-1231	13	Ball Bearing
930881-1	14	Spring Wave Washer
885470-957	15	Internal Retaining Ring
C40003-25	16	Square Key
C90244-1	17	Mitre Gear and Hub Clutch
C40164-46	18	Retaining Ring
C96445-1	19	Cylinder Bracket
C40073-2025	20	Spring Lockwasher
C40136-2505	21	Screw
739903-202	22	Air Cylinder
C40132-612	23	Screw
C40165-1006	24	High Collar Lockwasher
B140725-1	25	Cylinder Clevis
C40149-3118	26	Hex Jam Nut
B140724-1	27	Link Arm

## Page Pack Gear Box Assembly – D46997-1 Continued

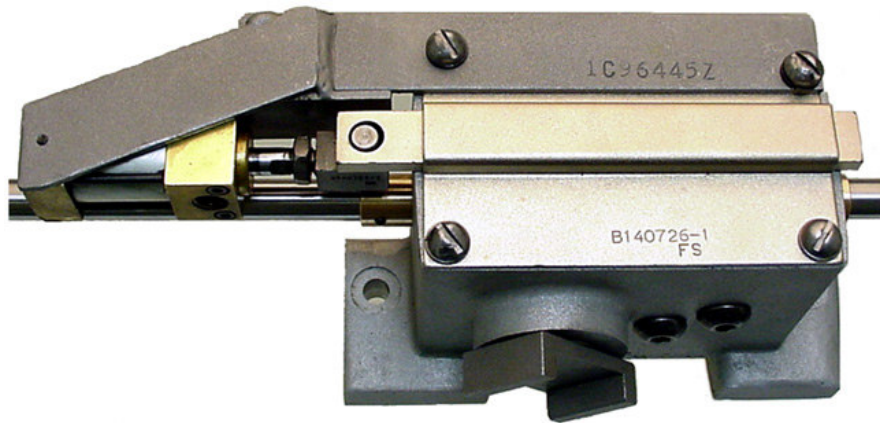
C40164-62	28	Retaining Ring
C90244-2	29	Mitre Gear and Hub Clutch
897009-2907	30	Compression Springs
720871-31	31	Steel Ball
B141089-1	32	Outer Clutch Sleeve
B141090-1	33	Clutch Sleeve



= Standard Replacement Parts

## Page Pack Gear Box Assembly (D46997-1)

If your pressroom is like most, you haven't paid much attention to the drive clutches for your page packs. We now have in stock the later model page pack drive clutches for the Headliner, Metro Color, and Colorliner presses. We have a limited supply of these clutches that we are willing to sell outright, so you can have some spares. We cannot sell all of them, because we want to have some in stock for the exchange program that we are currently offering. We completely tear these clutches down and clean them in our automated parts cleaning machines prior to replacing the springs and hard chrome balls. We also replace all four (4) of the bearings, the spiral pin connecting the clutch to the drive shaft, and the spiral pins in the brass sleeves on the shafts. The used drive shafts are put in one of our lathes and polished, but will probably show some corrosion from previous use. We also have our extreme gold coating applied to the top cover (B140726-1) and the clutch slide (B140724-1), which will help increase lubricity as long as ink and debris don't pile up and cause sticking.



### Exchange Program And Replacement Parts

We also offer an exchange program for these page pack clutches. We will send you the number of clutches that you need prior to you removing them from your press, and then you just send us your old ones back as an exchange. We also offer new steel drive shafts, stainless drive shafts, new covers and slides with our Extreme Gold coating applied, coating of your top covers and slides, and many other options. We are finding that a lot of our customers are planning the rebuild exchange program of these assemblies along with the rebuilding of their page packs. We can send the number of page packs you require each month along with the same number of page pack clutches. You can replace both at the same time, and simply return your page packs and page pack clutches on an exchange basis. This will particularly help those pressrooms that have a limited supply of spare page packs and page pack clutches by sending them what they need prior to putting the unit down for maintenance.

We are currently preparing to manufacture a new style lid for the page pack clutches, with the mount needed for the air cylinder integrated into it. In addition to this, we will also be adding an ink and debris shroud to this top to keep ink and debris from getting into the top and slide causing sticking of

the assembly. This is the MAIN cause of failure of these assemblies. By directing any ink or debris away from the top cover and slide we will keep the assembly functioning properly, and eliminate sticking. We hope to have one of these new covers available for display at the upcoming Metro Users Conference in January 2003.



Detailed below in the pricing chart are the options we offer on these page pack clutch drives.

Quantity	Part Number	Description	Price Per Part
1	PPP-D46997-1RB	Used Page pack Gear Box Assembly ➤ Rebuilt ➤ Includes Cleaned/Polished Original Shafts ➤ Outright Purchase ➤ While Supplies Last	\$250.00
1	PPP-D46997-1RB	Used Page Pack Gear Box Assembly ➤ Rebuilt ➤ Includes Cleaned and Polished Original Shafts ➤ With Exchange from Customer	\$100.00 Core Charge \$200.00
1-9 10+	PPP-B155778-1SS	Page Pack Gear Box Shaft ➤ 304 Stainless ➤ No Charge to Install on Used Gear Boxes ➤ Includes Spacers	\$30.00 \$28.00
1-9 10+	PPP-B155778-1	Page Pack Gear Box Shaft ➤ Steel ➤ No Charge to Install on Used Gear Boxes ➤ Includes Spacers	\$23.50 \$22.00
2 Needed Per Shaft	PPP-B130733-5	Page Pack Gear Box Shaft Spacer ➤ Brass ➤ Pre-Drill With a Centered Starting Hole ➤ No Charge to Install on Used Gear Boxes	\$1.50
1-99 100+	PPP-B131002-1	Page Pack Gear Box Bronze Coupling ➤ Made of Bearing Bronze ➤ With Raised Keyway on Inside Diameter	\$22.00 \$20.00
1	PPP-B140726-1EG PPP-B140724-1EG	Apply Extreme Gold to the Gear Box Slides and Covers ➤ 68-70 Rockwell C ➤ Increase Lubricity ➤ With Exchange from Customer	\$25.00 Per Set \$25.00 Core Charge
1	PPP-B140726-1 PPP-B140724-1	New Gear Box Slide and Cover ➤ Includes Extreme Gold Coating	\$65.00 Per Set